



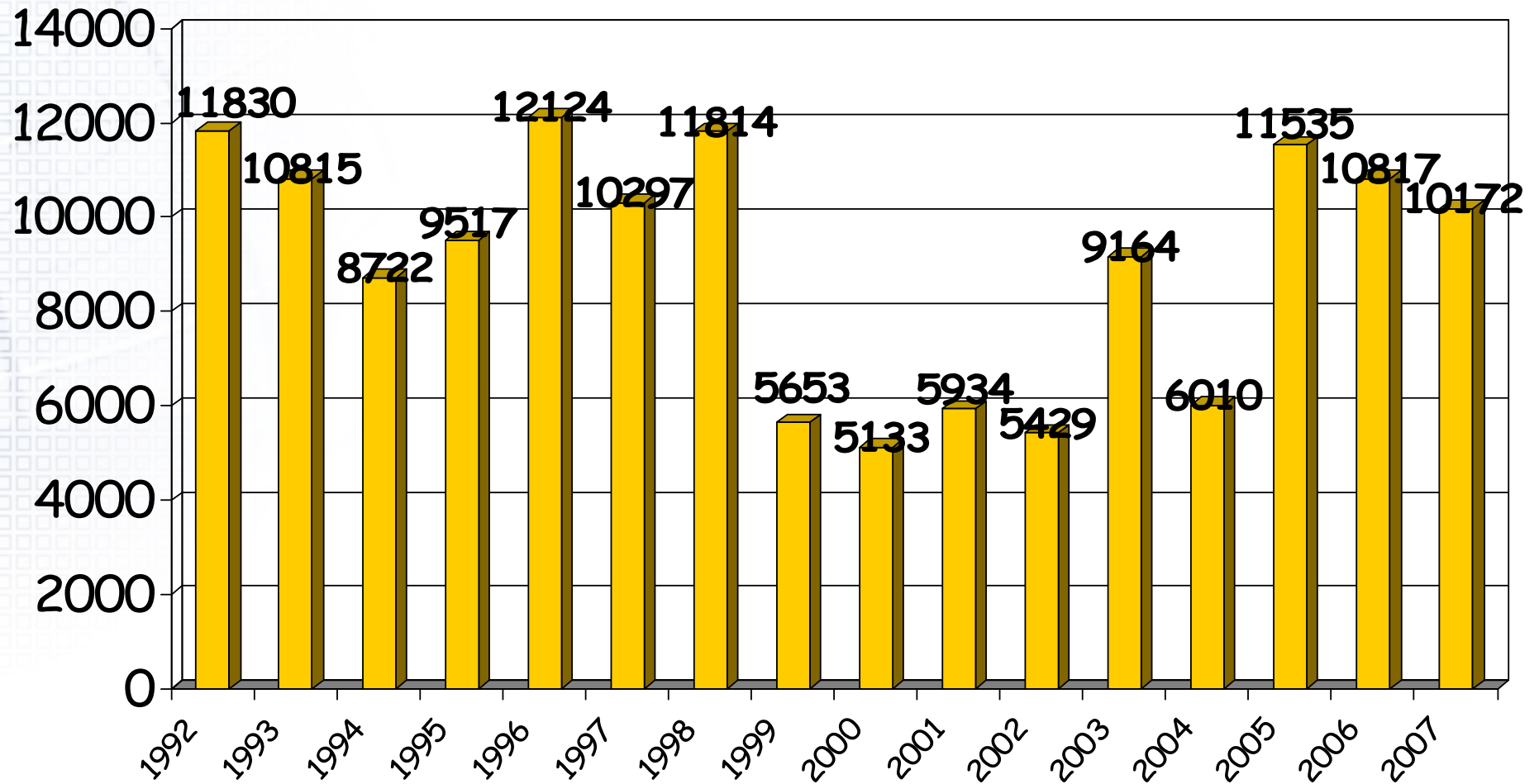
**Stephen S. Seeling, JD**

**Vice President for Operations  
ECFMG**

**September 23, 2008**

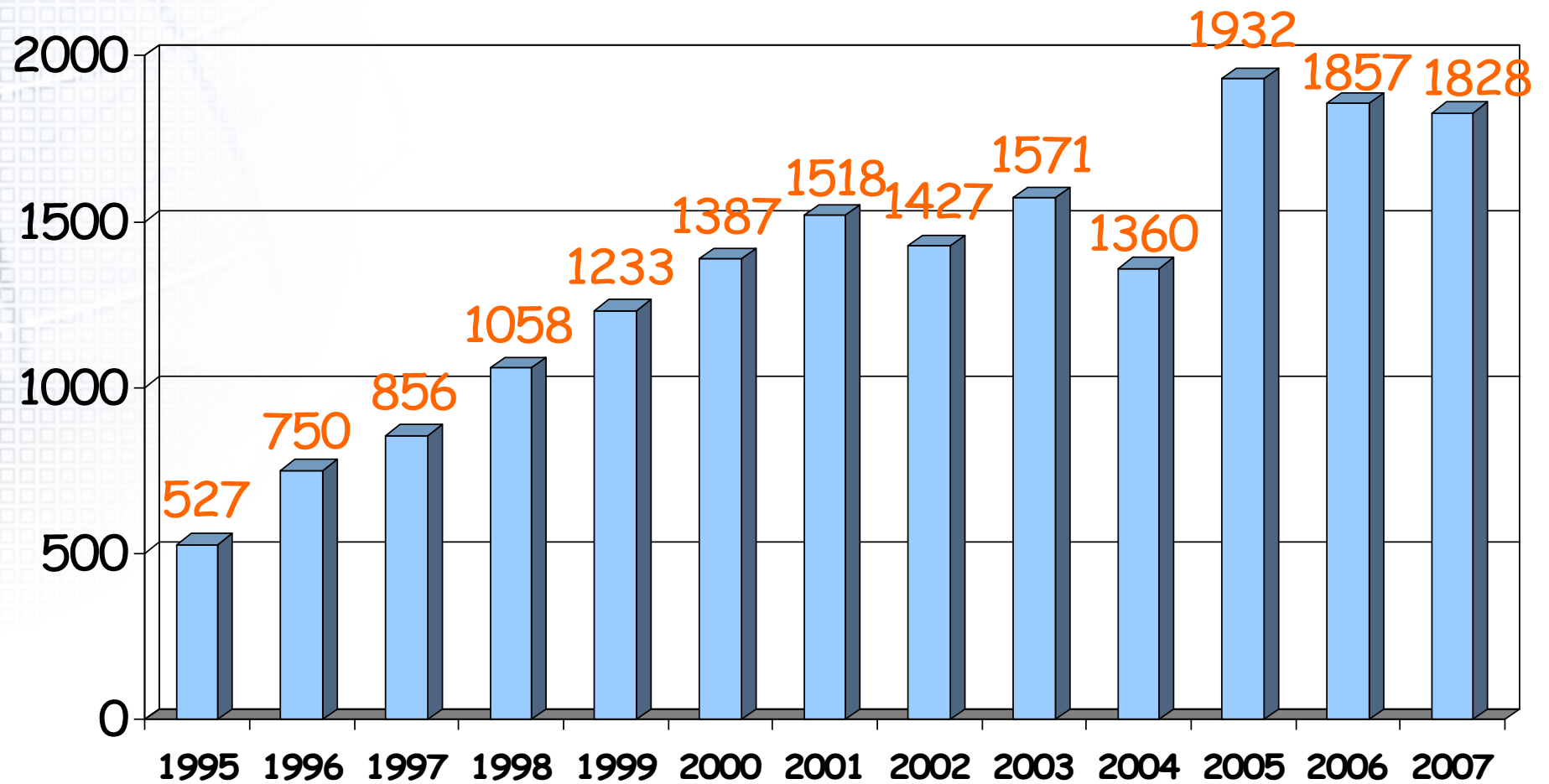


# Standard ECFMG Certificates Issued



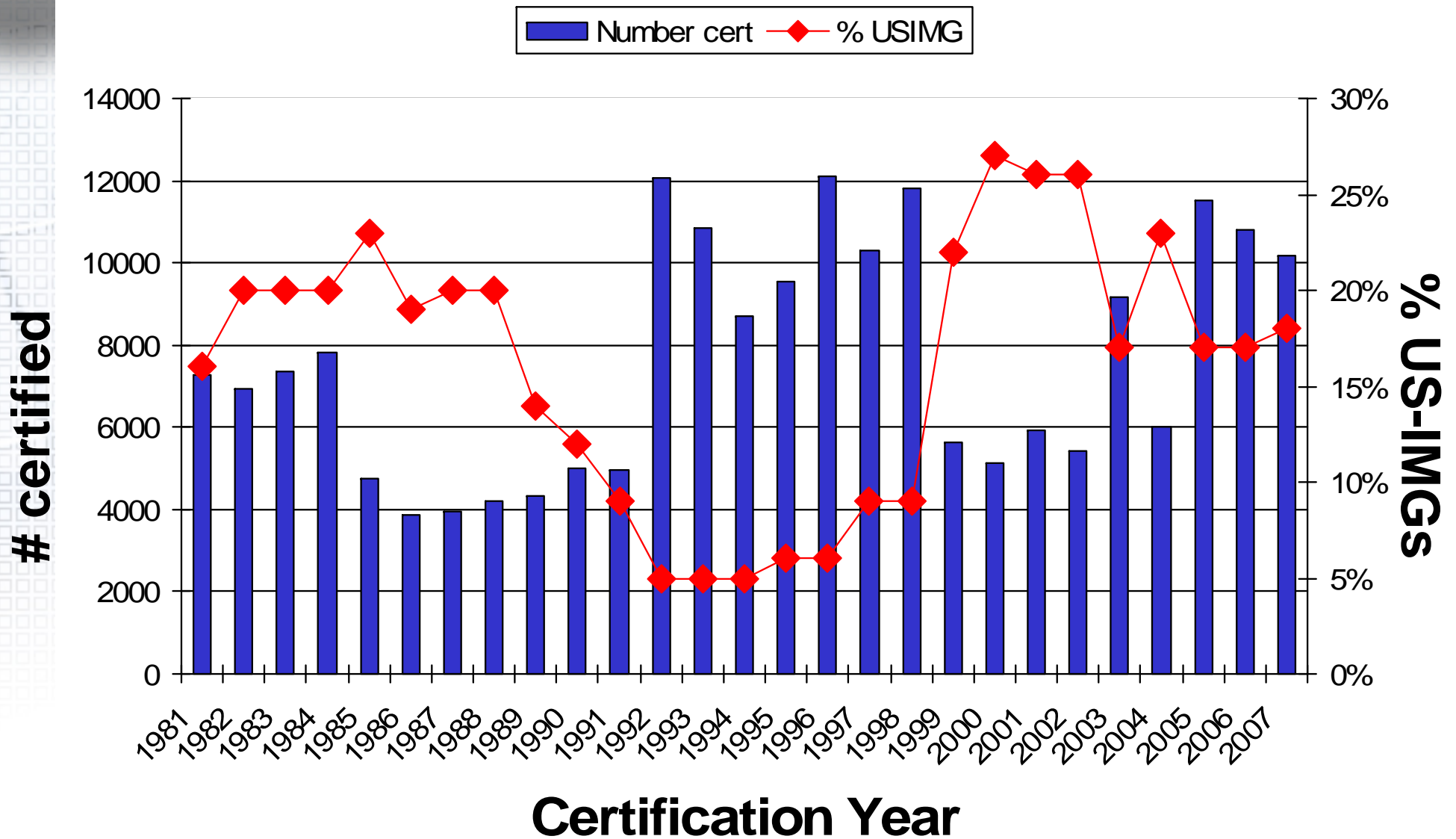


# Standard ECFMG Certificates Issued to US Citizens (at entry to medical school)





# ECFMG Certificates Issued to US- and non-US Citizens 1981-2007





# **ECFMG Certificates Issued by Country of Medical School**

## **Top 10 Countries – 1958 to 2006**

**India**

**Philippines**

**Pakistan**

**Germany**

**United Kingdom**

**Egypt**

**Mexico**

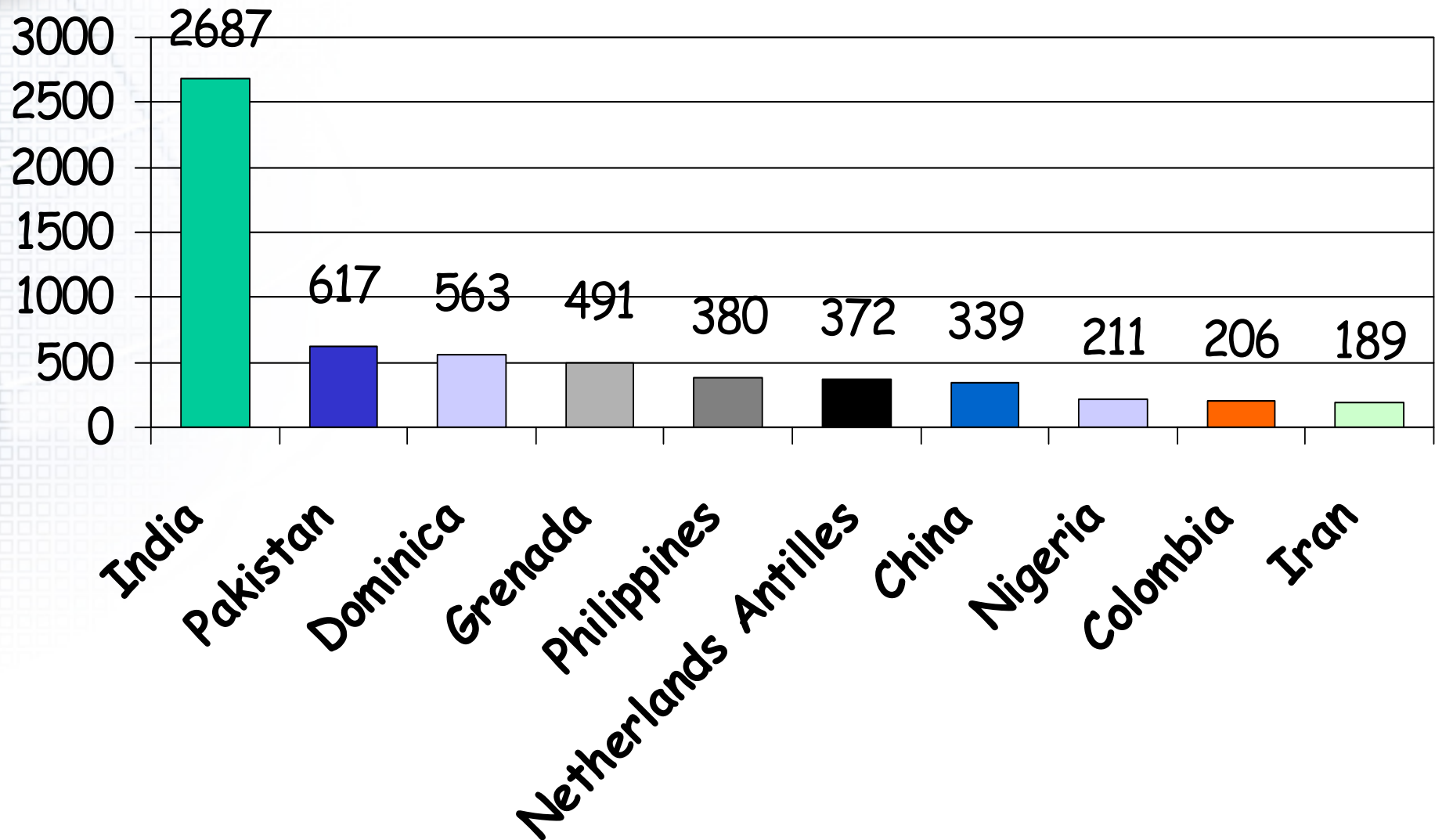
**Grenada**

**China**

**Dominican Republic**

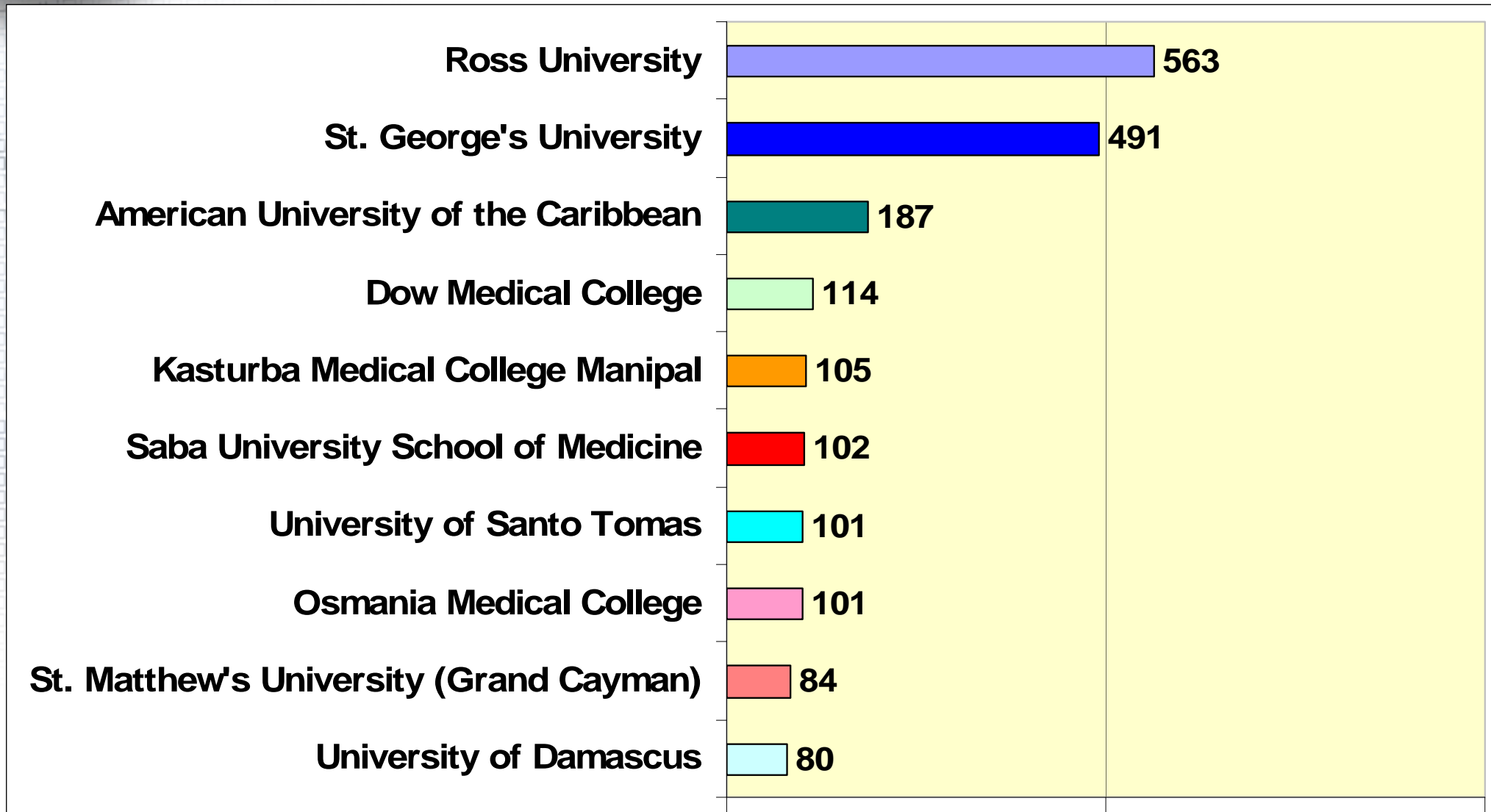


# Top Countries of Medical School by Number of Certificates Issued in 2007





# Top 10 Medical Schools by Number of Graduates Receiving Certificates in 2007





# ECFMG Applicants & Certificate Holders 1981-2005: Countries of Citizenship

Country of citizenship	Applicants	Certified	
		#	%
India	49590	32955	67%
USA	42642	23096	54%
Pakistan	21020	10351	49%
Philippines	18351	7870	43%
Germany	13212	4552	34%
Egypt	8805	3708	42%
Former Soviet Republics	8521	5386	63%
Korea	8438	1305	15%
China	8180	5388	66%
Japan	6623	1131	17%
Other countries	143962	67882	47%
Total	329344	163624	50%

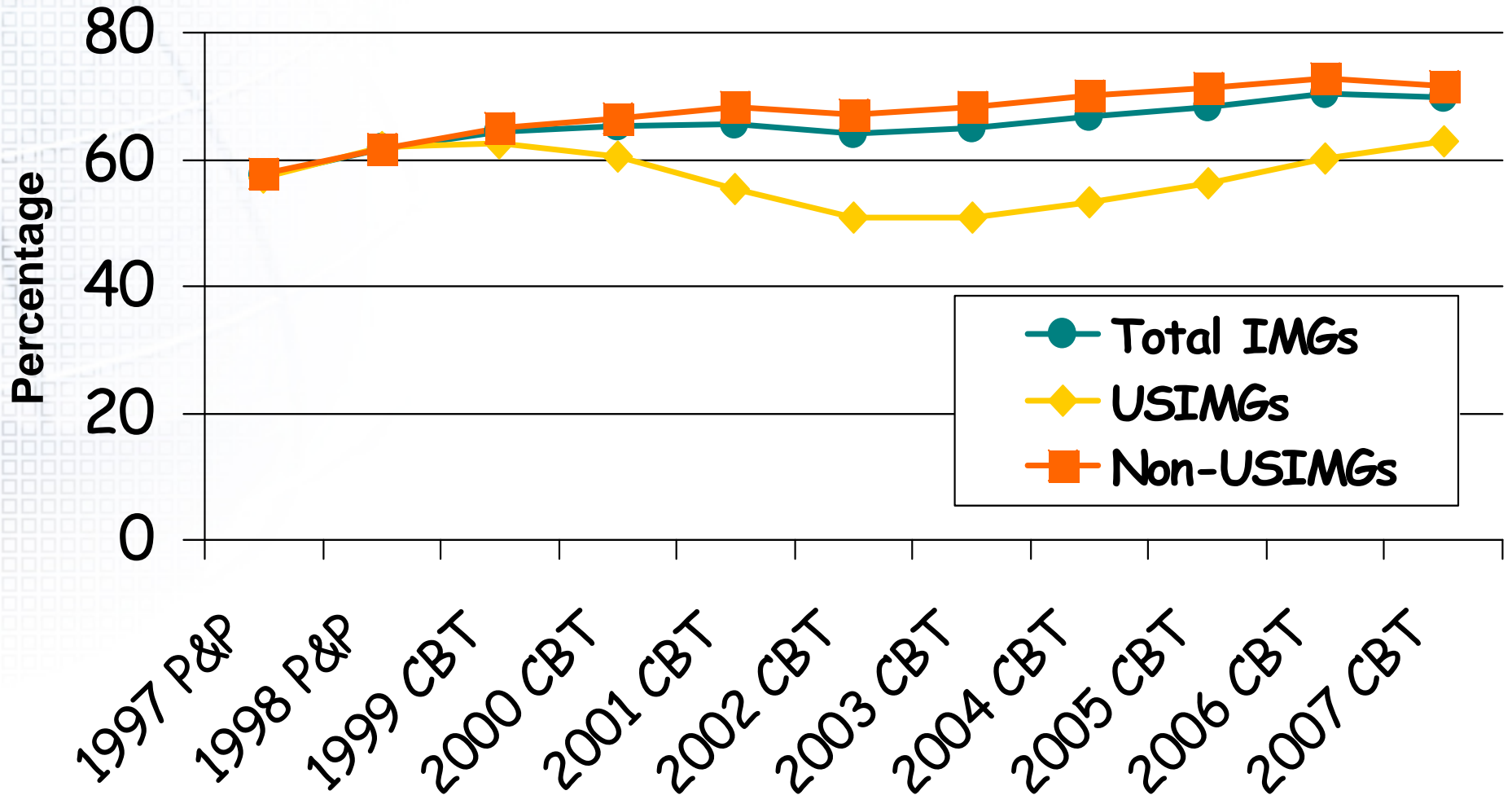


# ECFMG Applicants & Certificate Holders 1981-2005: Countries of Medical School

Country of medical school	Applicants #	Certified	
		#	%
India	50082	33417	67%
Philippines	21266	9350	44%
Pakistan	21139	10524	50%
Germany	14609	5182	35%
Mexico	13704	2857	21%
Dominican Republic	10407	4153	40%
Former Soviet Republics	10113	5915	58%
Egypt	9978	4030	40%
Korea	8342	1281	15%
China	7677	5140	67%
Other countries	162027	81775	50%
Total	329344	163624	50%

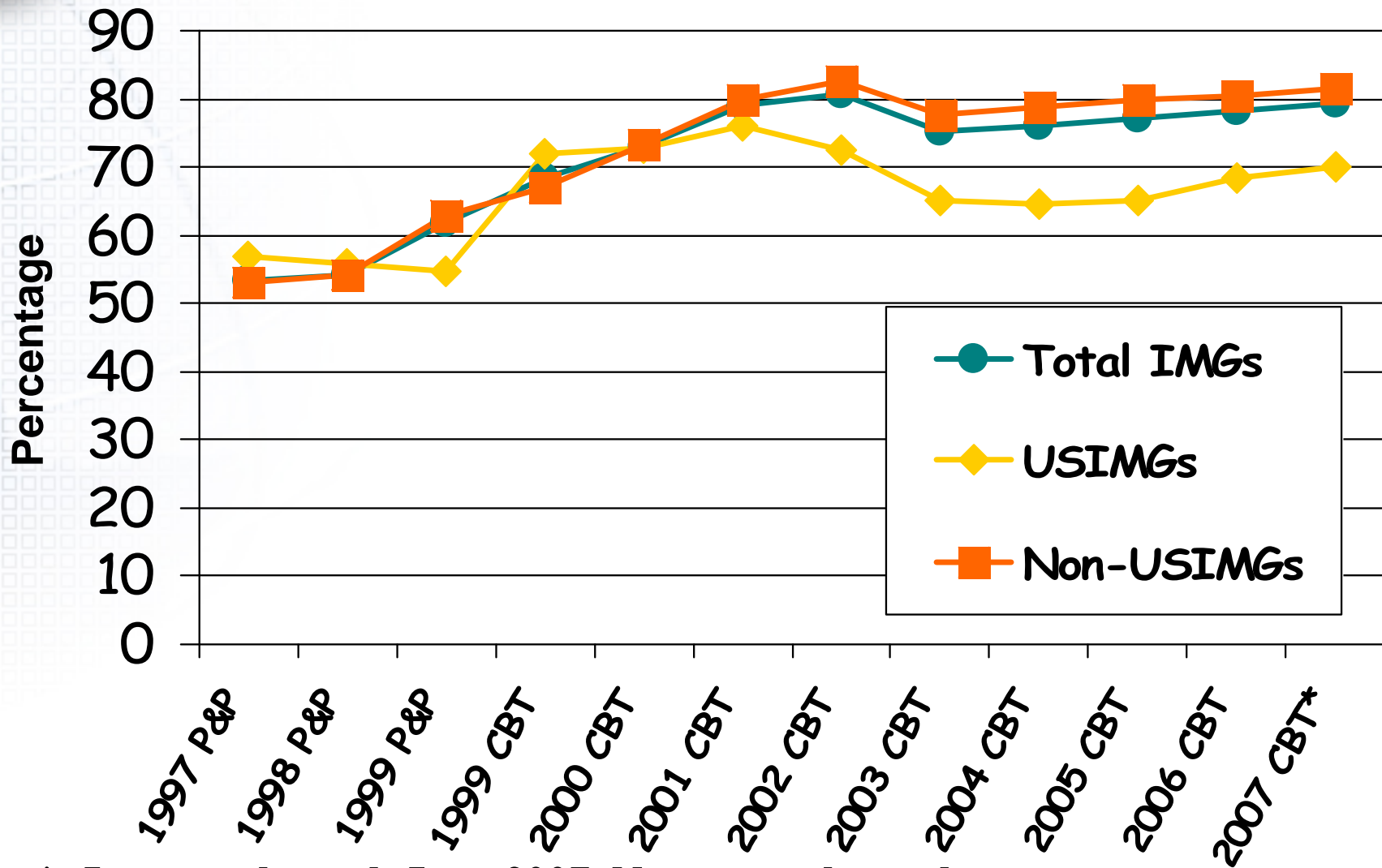


# USMLE Step 1 Percent IMGs Passing 1997-2007 (first-time takers)





# USMLE Step 2 CK Percent IMGs Passing 1997-2007 (first-time takers)

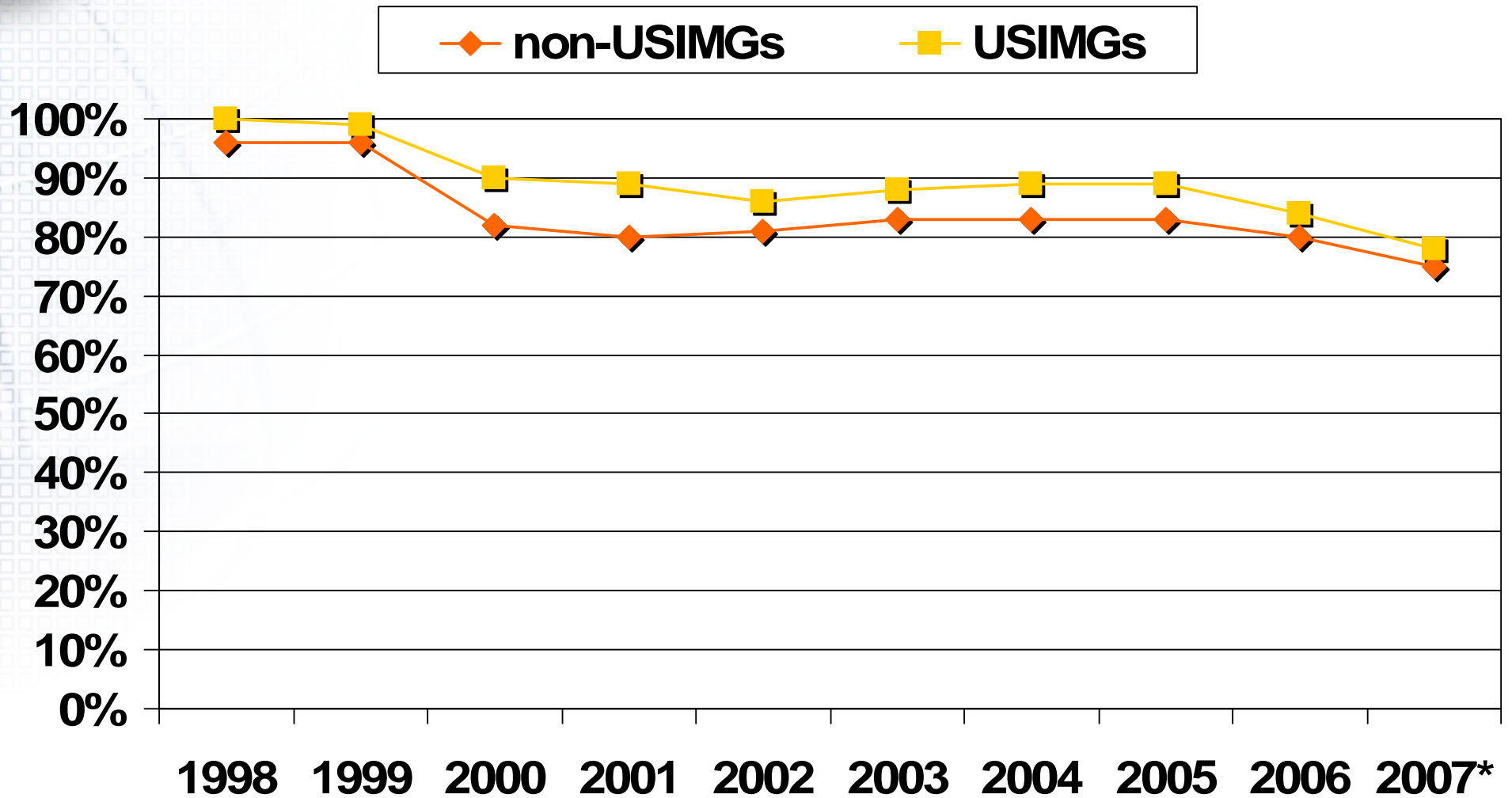


\* January through June 2007. Not a complete cohort.



# Clinical Skills Performance

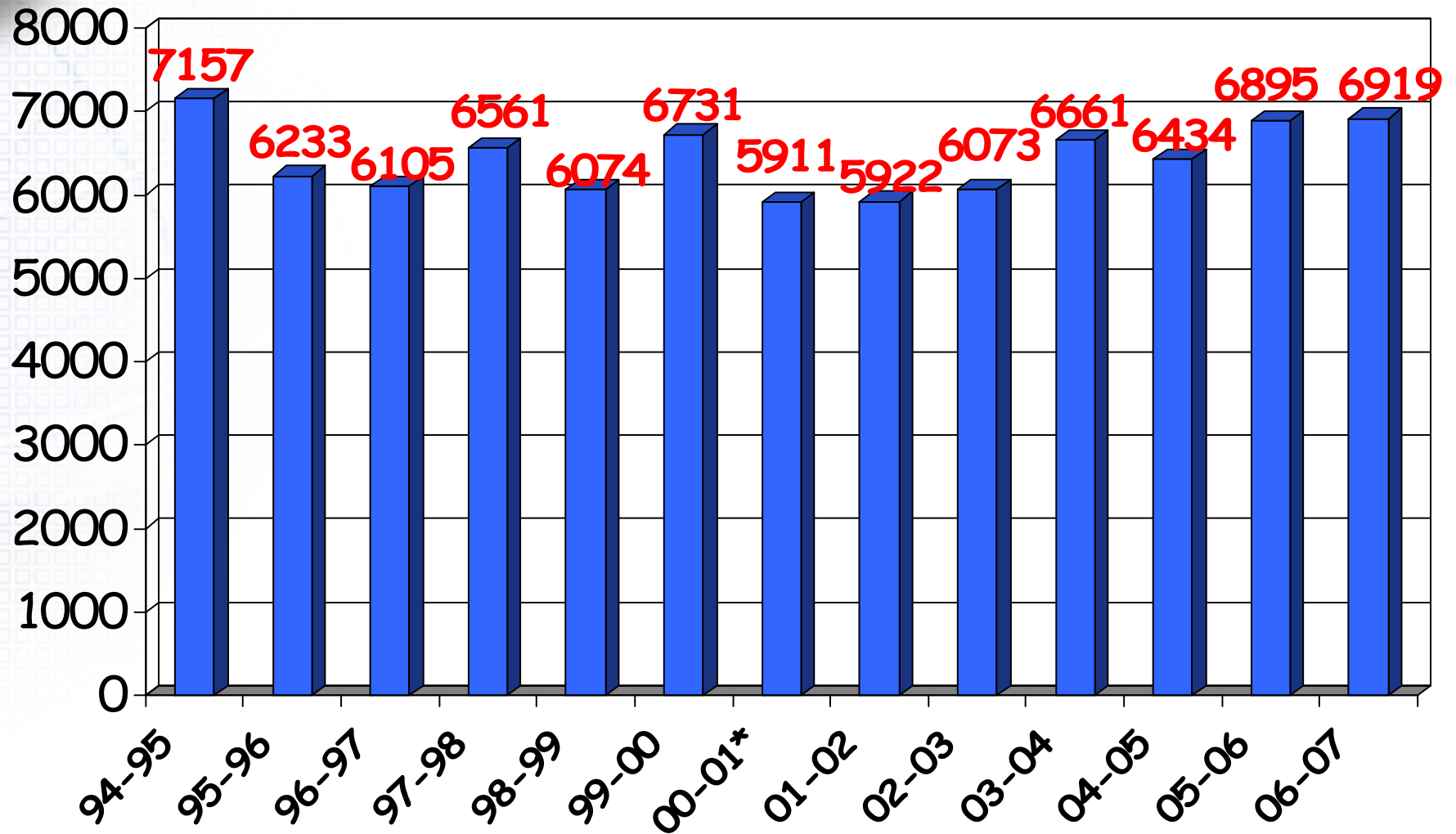
(first-time takers)



\* January through June 2007. Not a complete cohort.



# IMGs in PGY1 Positions in ACGME Programs



Source: Graduate Medical Education Database, AMA

\* Undercount due to technical problems in data collection

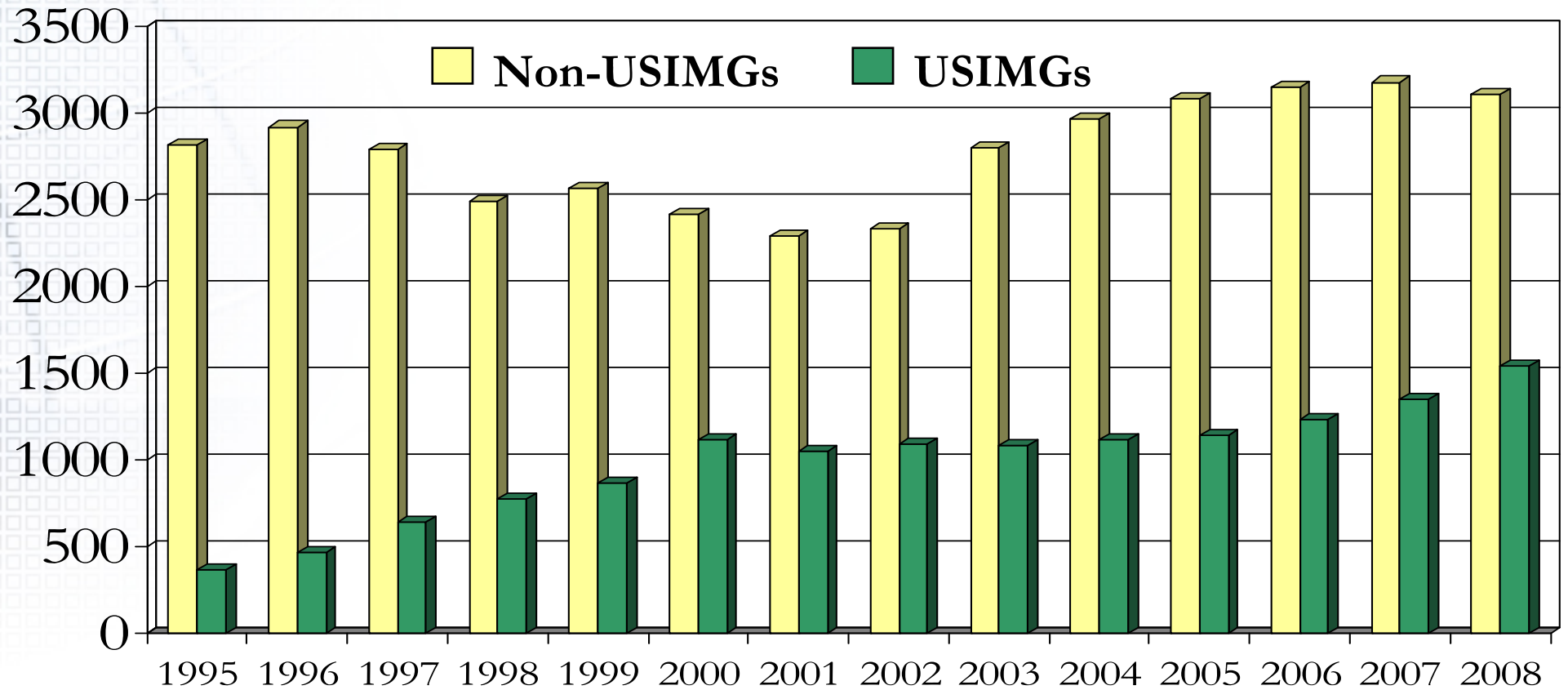


# National Resident Matching Program Data

<i>Active Applicants</i>	<b>2007</b>	<b>2008</b>
<b>Total IMG</b>	<b>9,686</b>	<b>10,304</b>
<i>Number Matched</i>	<b>4,527</b>	<b>4,649</b>
<i>Percent Matched</i>	<b>47%</b>	<b>45%</b>
<b>US Citizen IMG</b>	<b>2,694</b>	<b>2,969</b>
<i>Number Matched</i>	<b>1,347</b>	<b>1,541</b>
<i>Percent Matched</i>	<b>50%</b>	<b>52%</b>
<b>Non-US Citizen IMG</b>	<b>6,992</b>	<b>7,335</b>
<i>Number Matched</i>	<b>3,180</b>	<b>3,108</b>
<i>Percent Matched</i>	<b>46%</b>	<b>42%</b>



# Successful Matches Non-USIMGs vs USIMGs



*% USIMG*

*of total*

*11.5 13.7 18.6 23.7 25.2 31.5 31.4 31.9 27.9 27.3 27.0 28.1 29.8 33.1*

*IMG matches*